

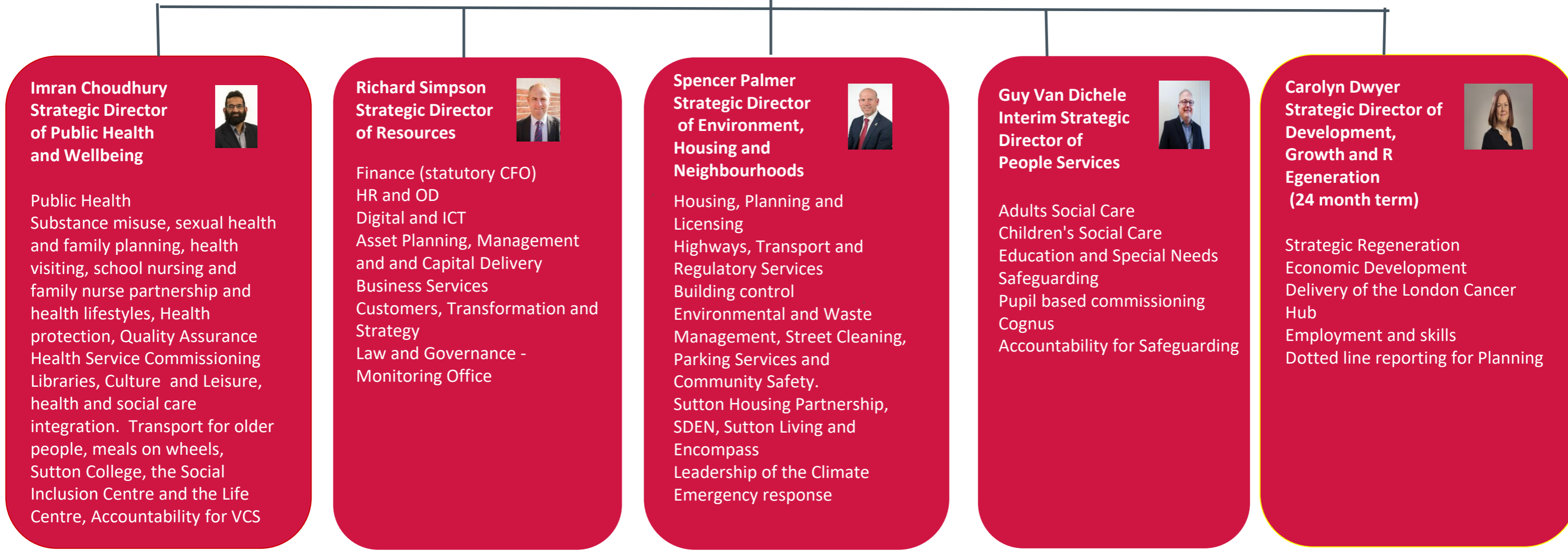
# London Borough of Sutton – Structure Chart March 2023



**Helen Bailey**  
**Chief Executive**  
 Responsible for implementing the decisions of the council ensuring all functions, duties and powers are properly exercised and overseeing the efficient planning of the council's services. The Chief Executive is also the Electoral Registration and Returning Officer.



**Martha Matheou**  
**Head of Electoral Services**  
 Responsible for electoral registration, electoral administration and the delivery of all electoral functions.



**Imran Choudhury**  
**Strategic Director of Public Health and Wellbeing**

Public Health  
 Substance misuse, sexual health and family planning, health visiting, school nursing and family nurse partnership and health lifestyles, Health protection, Quality Assurance  
 Health Service Commissioning  
 Libraries, Culture and Leisure, health and social care integration. Transport for older people, meals on wheels, Sutton College, the Social Inclusion Centre and the Life Centre, Accountability for VCS

**Richard Simpson**  
**Strategic Director of Resources**

Finance (statutory CFO)  
 HR and OD  
 Digital and ICT  
 Asset Planning, Management and and Capital Delivery  
 Business Services  
 Customers, Transformation and Strategy  
 Law and Governance -  
 Monitoring Office

**Spencer Palmer**  
**Strategic Director of Environment, Housing and Neighbourhoods**

Housing, Planning and Licensing  
 Highways, Transport and Regulatory Services  
 Building control  
 Environmental and Waste Management, Street Cleaning, Parking Services and Community Safety.  
 Sutton Housing Partnership, SDEN, Sutton Living and Encompass  
 Leadership of the Climate  
 Emergency response

**Guy Van Dichele**  
**Interim Strategic Director of People Services**

Adults Social Care  
 Children's Social Care  
 Education and Special Needs  
 Safeguarding  
 Pupil based commissioning  
 Cognus  
 Accountability for Safeguarding

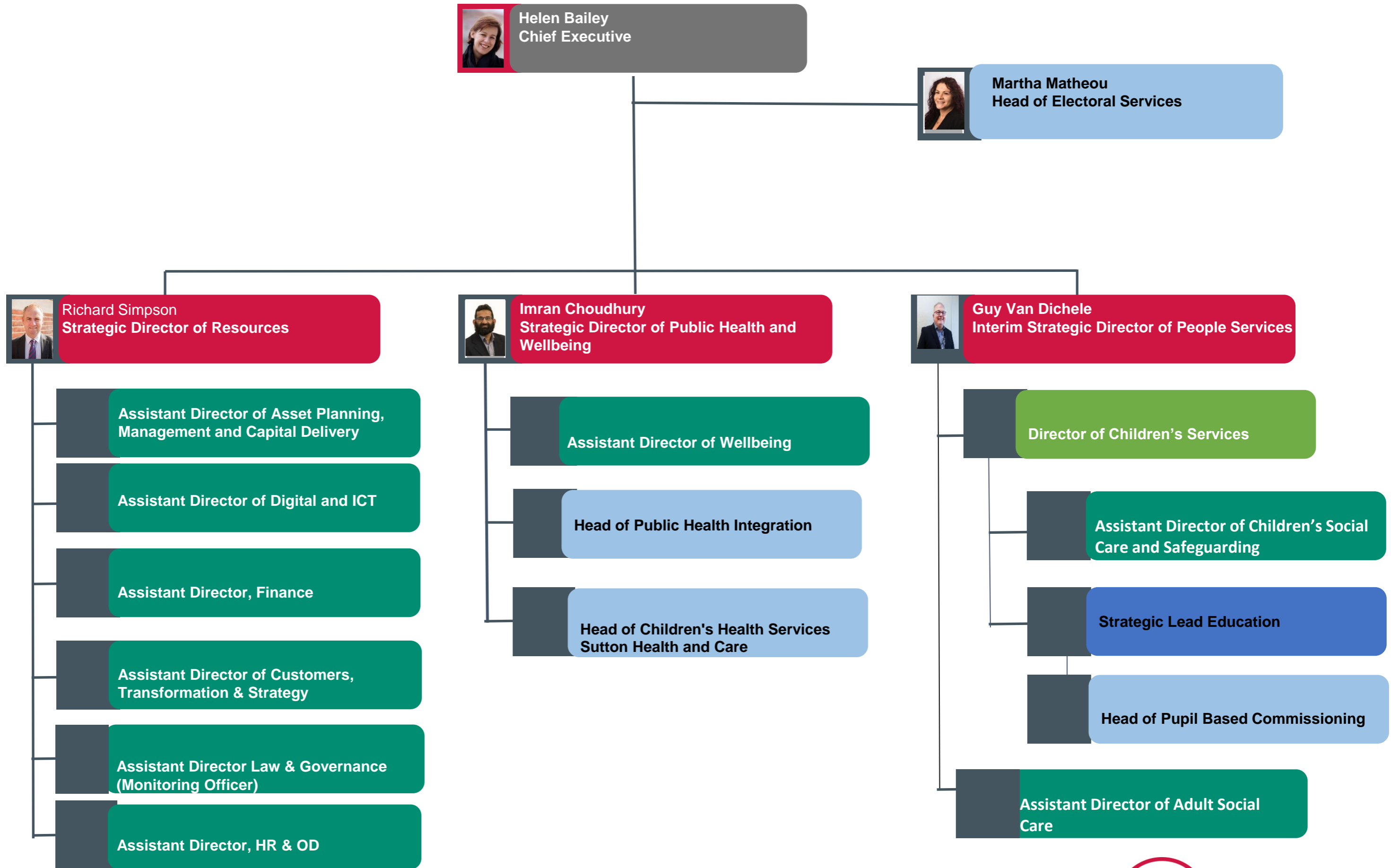
**Carolyn Dwyer**  
**Strategic Director of Development, Growth and R Egeneration (24 month term)**

Strategic Regeneration  
 Economic Development  
 Delivery of the London Cancer Hub  
 Employment and skills  
 Dotted line reporting for Planning

**Ambitious for Sutton - Having the Right Capacity to Deliver**



# London Borough of Sutton – Organisational March 2023 (1 of 2)



# PEOPLE SERVICES DIRECTORATE

